

# Spiritual Implications of Climate Change

June 12th to 14th, 2009

**Climate change** is widely regarded as one of the most important issues facing humanity today. What are the spiritual implications of this global crisis?

If you are very concerned about the issue of climate change but seek a hope-filled response from a faith perspective, this retreat is for you. It will open you up to the inspiration of nature and help you to see and appreciate the diversity of life, thereby awakening the biophilia inherent in all of us. It will also explore how a shift in our outlook on biodiversity and a deeper understanding of the issues impacting it can go a long way in preparing us to change our lifestyles and have a more gentle and benign impact on Earth.

**During the course of the retreat,** you will have ample opportunities to rest, drink in the beauty of the natural surroundings, reflect and share with other participants. The focus will be on personal restoration, renewal and the healing of our relationship with Earth.

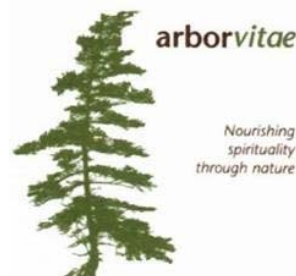
---

“In the end, the greatest catalyst for change may yet come from the synergistic impact of the best of human resourcefulness, combined with the beauty and inspiration of biodiversity, to which our species owes both its survival and its depths of spirit”

*Marianne Karsh*

---

**The retreat is** facilitated by Marianne Karsh, coordinator of the Ecology Project ([www.ignatiusguelph.ca](http://www.ignatiusguelph.ca)) and the director of Arborvitae ([www.arborvitae.org](http://www.arborvitae.org)). During the retreat, Marianne will be drawing upon her presentations at the Climate Change and Biodiversity in the Americas Symposium in Panama in February 2008, as well as her 2008 White Paper for Environment Canada entitled *Gaps in Climate Change and Biodiversity*.



**Cost: \$325.00 Cdn** - includes retreat program, two nights accommodation and all meals.

**To apply** for this program, please send a \$50 CDN non-refundable deposit **along** with a completed online or mail-in application form found on our website [www.loyolahouse.ca](http://www.loyolahouse.ca) under “Application.” The balance of payment is due prior to the start of the program.

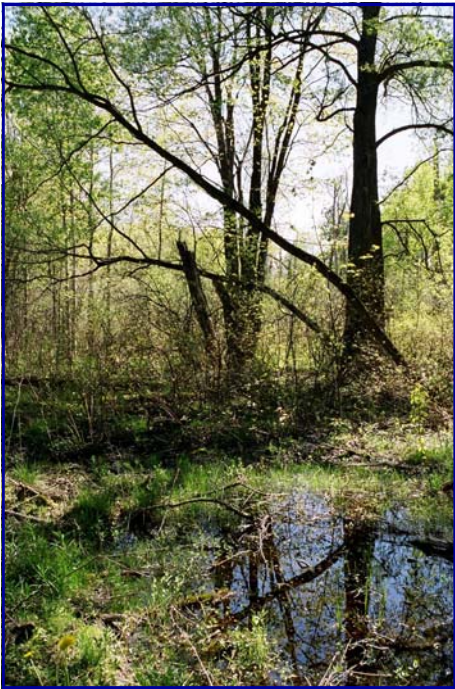
**Payment** can be made by cash, cheque, money order, Visa, MasterCard or bank draft in Canadian funds payable and mailed to Loyola House.

**The program begins** promptly at 8:00 p.m. on Friday, June 12, 2009 and ends with lunch on Sunday, June 14, 2009. Please arrive in plenty of time to relax and settle in.



**When you walk humbly with your God**, when you walk this creation in humility, loving kindness and seeking justice, you will not just see the ecological destruction all around us. You will see even more deeply the sheer beauty, creativity, power, glory and joy of this world of wonders that our God has created.

**The apprehension of Earth's beauty** in the face of the current ecological crisis changes us. Not only will we care for this planet out of a sense of responsibility, we will walk lightly on this creation out of love, out of a sense that all of this is hallowed ground.



**Loyola House** is located at the Ignatius Jesuit Centre one kilometre north of Guelph, Ontario, on 243 hectares of beautiful farmland, with rolling hills, woods and wetlands – all of it accessible to those who take part in our programs. We also have a pool. You are encouraged to enjoy our property. Bring that which is helpful for you to be with God and the Earth.



**We have a variety of programming at Loyola House.**

For more information, contact:

**The Registrar, Loyola House**

P.O. Box 245, Guelph, ON

Canada. N1H 6J9

Tel: (519) 824-1250, ext. 266

Fax: (519) 767-0994

e-mail: [registration@loyolahouse.ca](mailto:registration@loyolahouse.ca)  
or visit [www.loyolahouse.ca](http://www.loyolahouse.ca)

# Spiritual Implications of Climate Change

June 12th to 14th, 2009



**Loyola House**

[www.loyolahouse.ca](http://www.loyolahouse.ca)